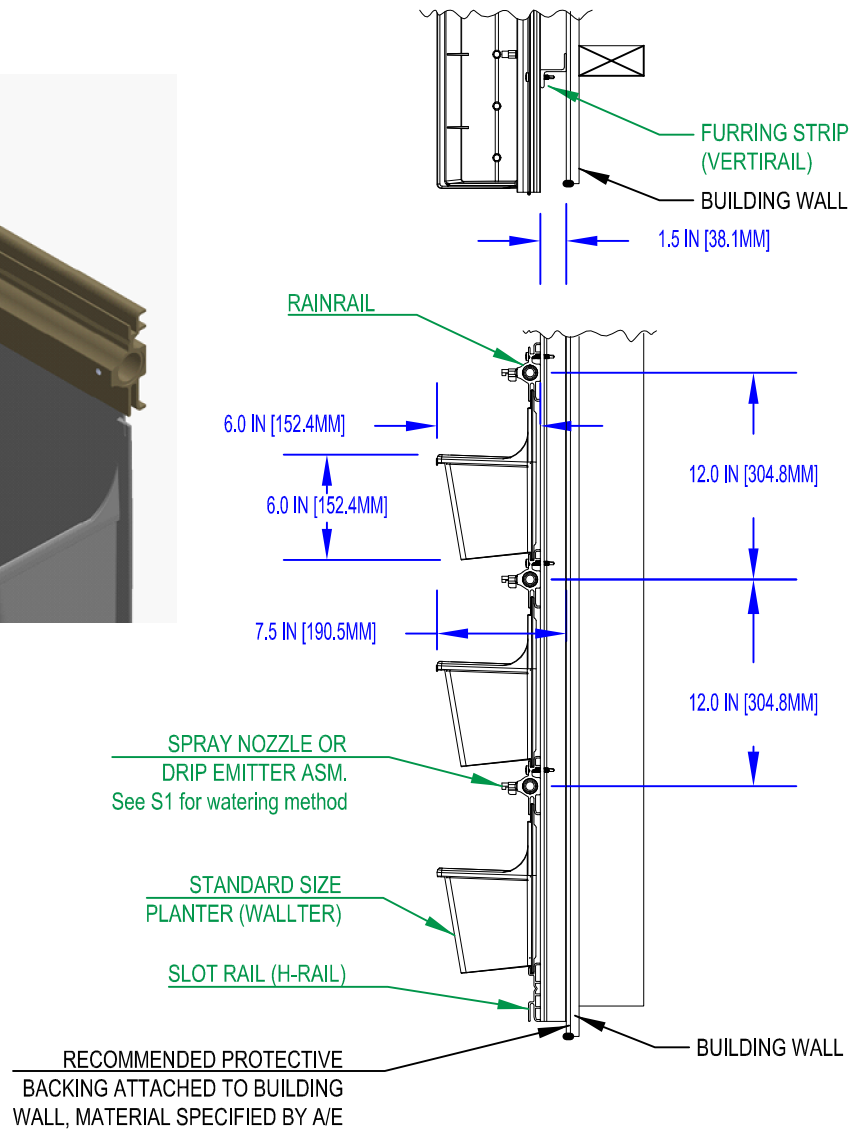
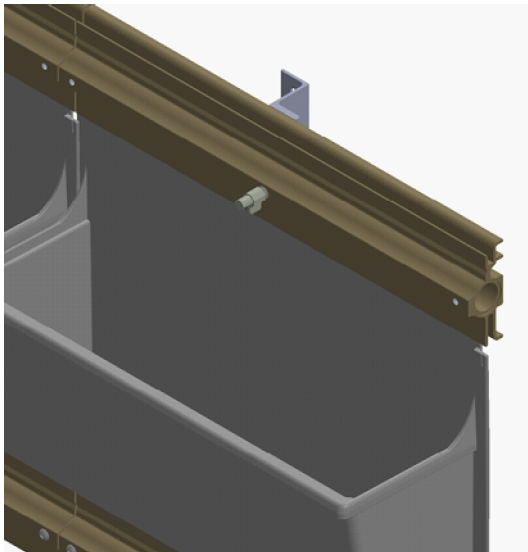


LiveWall Section (Outdoor)

S2S

SIDE VIEW - STANDARD SIZE PLANTERS SIDE FEED IRRIGATION



BOTTOM OF THE FURRING STRIP AND THE BOTTOM OF THE RAINRAIL ARE FLUSH

NOTES:

1. REFER TO S1 FOR PLANTER COLOR, WATERING METHOD AND DRAIN TYPE.
2. STANDARD SIDE FEED IRRIGATION OPTION REQUIRES 8" (203.2 MM) ADDITIONAL HORIZONTAL WALL SPACE FOR CHASE OR FRAMING TO CONCEAL LINES AND VALVES. INLINE IRRIGATION OPTION REQUIRES 16" (406.4 MM) ADDITIONAL HORIZONTAL WALL SPACE FOR CHASE OR FRAMING TO CONCEAL LINES AND VALVES (CONFIRM WITH LIVEWALLTECHNICAL REP FOR SPECIFIC WALL LAYOUT).

LiveWall®

LiveWall, LLC
P.O. Box 533
Spring Lake, MI. 49456

www.livewall.com

(877) 554-4065

Rev. 2/1/2022